



MEDICAL OFFICE SPACE FOR LEASE

820 W. Frontier Lane, Olathe, Kansas



CONFIDENTIAL - PLEASE DO NOT DISTURB CURRENT TENANT

4,240 SF FOR LEASE | CALL FOR PRICING

DEMOGRAPHICS

	1 mile	3 miles	5 miles
Estimated Population	4,090	64,641	139,428
Avg. Household Income	\$98,465	\$117,153	\$132,413

- Medical office space with 11 exam rooms
- Lab, breakroom, and private offices
- Just North of Olathe Medical Center
- High growing retail and commercial area.



CLICK HERE TO VIEW MORE LISTING INFORMATION

For More Information Contact:

GARRETT COHOON | 816.412.7315 | gcohoon@blockandco.com

Exclusive Agent



PHOTOS

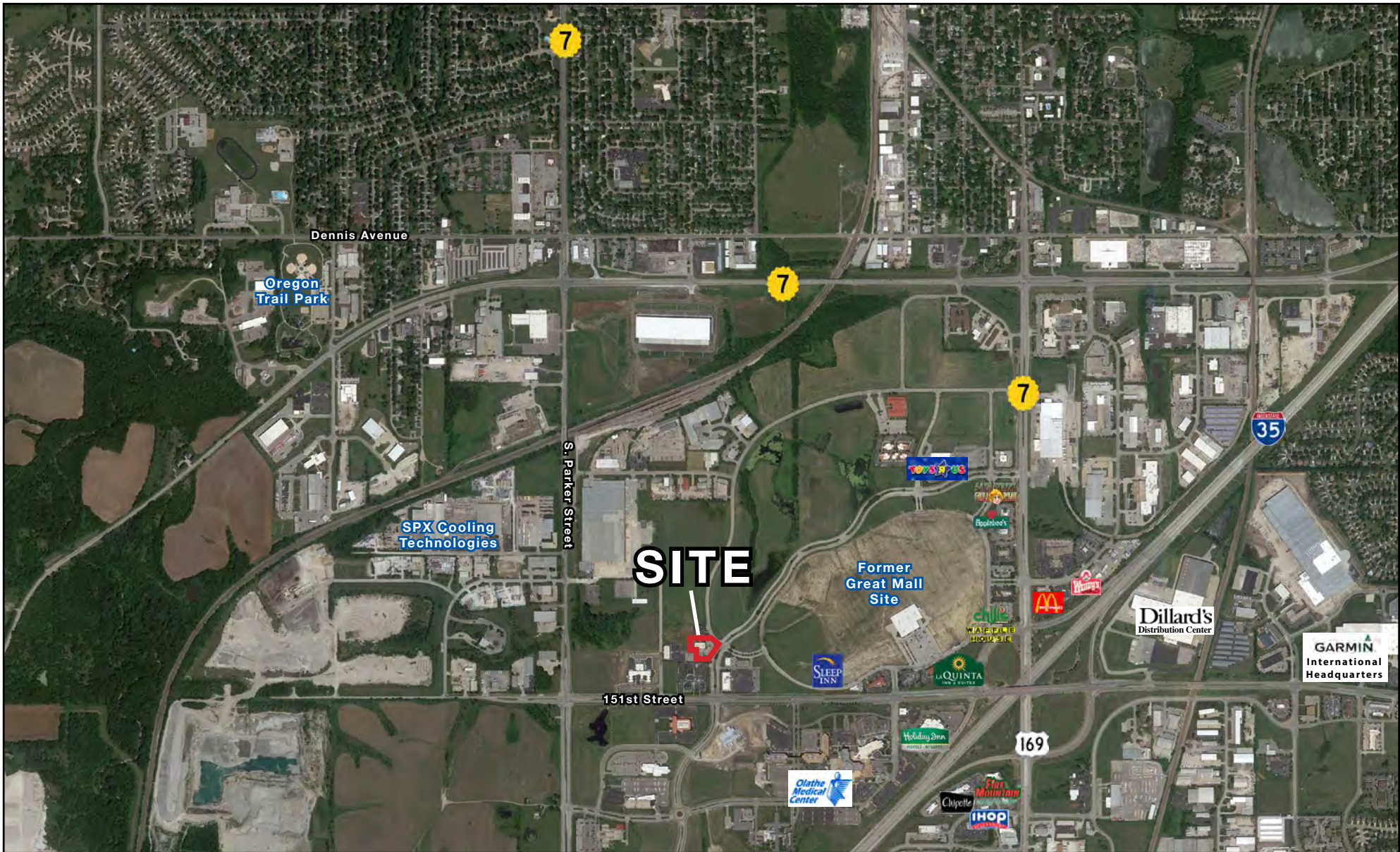




PRIVATE OFFICE BUILDING FOR SALE

910 W. Frontier Lane, Olathe, Kansas

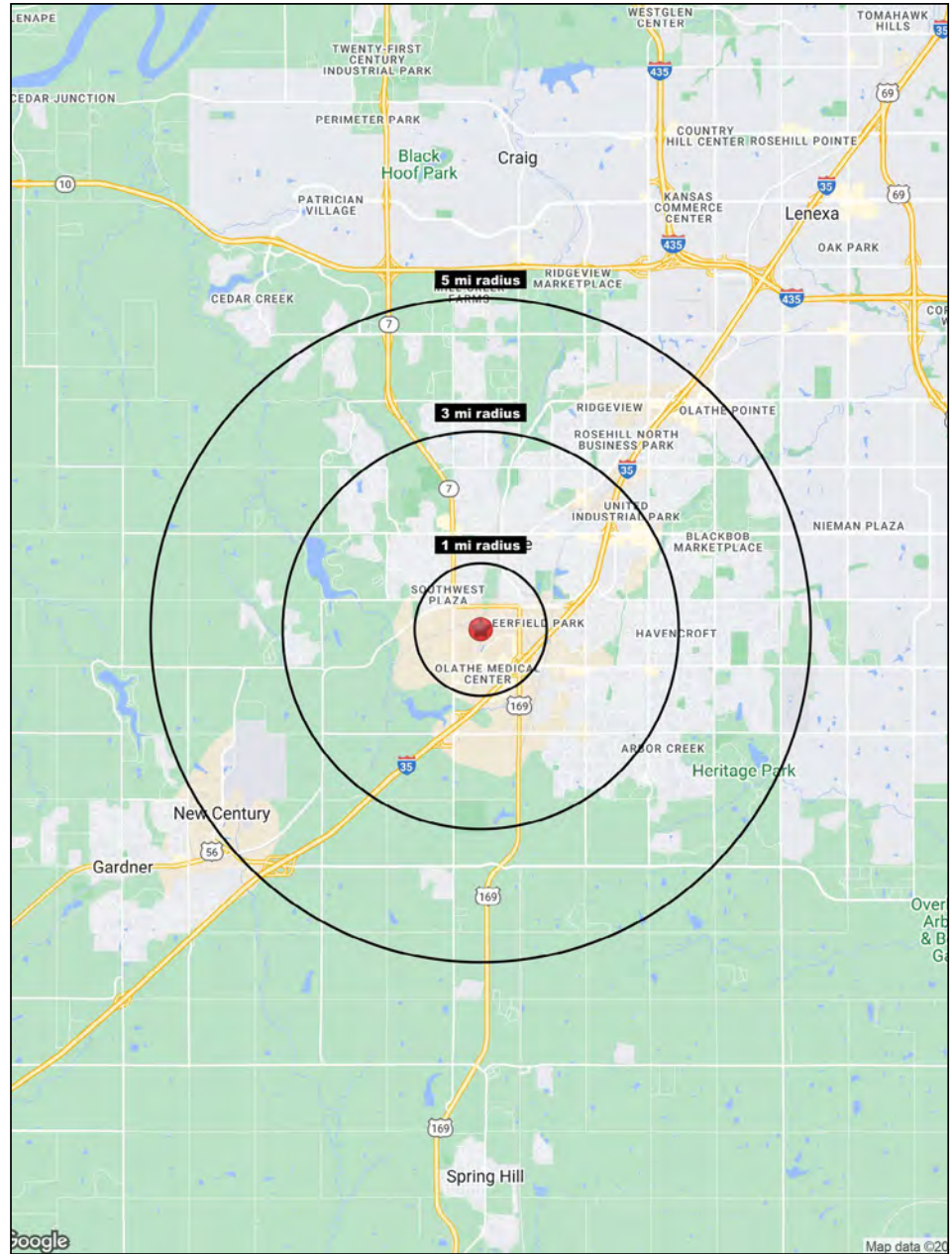
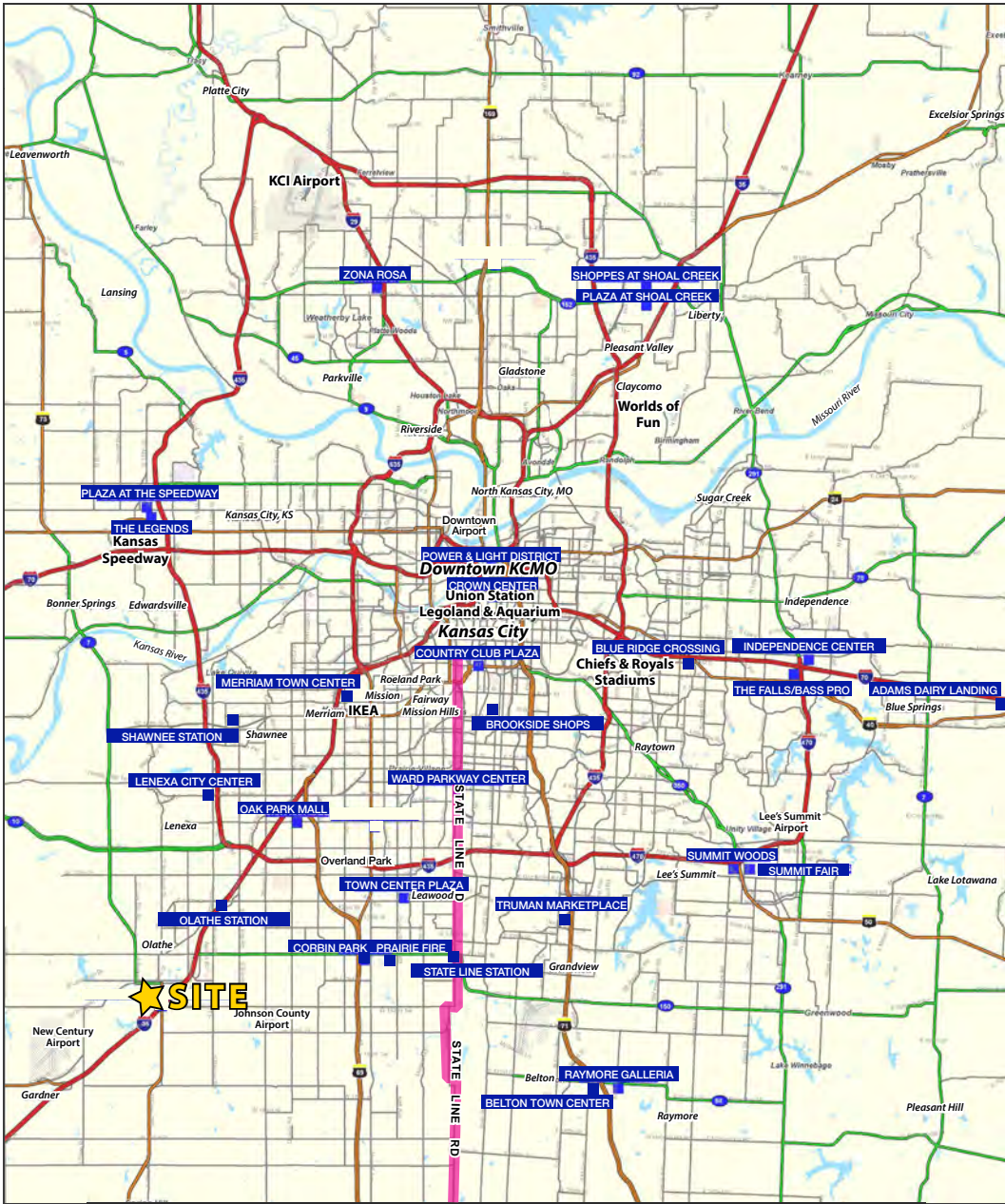
AERIAL





PRIVATE OFFICE BUILDING FOR SALE

910 W. Frontier Lane, Olathe, Kansas



Block & Company, Inc., Realtors | 605 W. 47th Street, Ste. 200, Kansas City, MO 64112 | 816.753.6000 | www.blockandco.com



All information furnished regarding property for sale or lease is from sources deemed reliable, but no warranty or representation is made as to the accuracy thereof and the same is subject to errors, omissions, changes of prices, rental or other conditions, prior sale or lease or withdrawal without notice.



PRIVATE OFFICE BUILDING FOR SALE

910 W. Frontier Lane, Olathe, Kansas

820 W. Frontier Lane Olathe, KS 66061	1 mi radius	3 mi radius	5 mi radius
Population			
2023 Estimated Population	4,090	64,641	139,428
2028 Projected Population	4,333	68,628	152,556
2020 Census Population	3,722	63,697	135,359
2010 Census Population	3,709	59,762	121,427
Projected Annual Growth 2023 to 2028	1.2%	1.2%	1.9%
Historical Annual Growth 2010 to 2023	0.8%	0.6%	1.1%
2023 Median Age	36.6	34.2	34.4
Households			
2023 Estimated Households	1,554	23,175	49,820
2028 Projected Households	1,666	24,734	54,667
2020 Census Households	1,347	22,248	46,996
2010 Census Households	1,307	20,725	42,132
Projected Annual Growth 2023 to 2028	1.4%	1.3%	1.9%
Historical Annual Growth 2010 to 2023	1.5%	0.9%	1.4%
Race and Ethnicity			
2023 Estimated White	64.9%	74.1%	75.7%
2023 Estimated Black or African American	4.1%	7.2%	7.1%
2023 Estimated Asian or Pacific Islander	1.3%	4.5%	5.4%
2023 Estimated American Indian or Native Alaskan	0.7%	0.4%	0.4%
2023 Estimated Other Races	28.9%	13.7%	11.5%
2023 Estimated Hispanic	33.5%	14.4%	11.9%
Income			
2023 Estimated Average Household Income	\$98,465	\$117,153	\$132,413
2023 Estimated Median Household Income	\$80,323	\$101,384	\$114,565
2023 Estimated Per Capita Income	\$37,854	\$42,178	\$47,528
Education (Age 25+)			
2023 Estimated Elementary (Grade Level 0 to 8)	8.2%	3.0%	2.4%
2023 Estimated Some High School (Grade Level 9 to 11)	8.4%	4.8%	3.2%
2023 Estimated High School Graduate	26.2%	18.2%	15.7%
2023 Estimated Some College	20.2%	20.1%	19.0%
2023 Estimated Associates Degree Only	12.1%	9.3%	8.0%
2023 Estimated Bachelors Degree Only	15.8%	27.1%	31.8%
2023 Estimated Graduate Degree	9.1%	17.5%	20.0%
Business			
2023 Estimated Total Businesses	276	1,976	3,511
2023 Estimated Total Employees	5,203	27,577	49,655
2023 Estimated Employee Population per Business	18.9	14.0	14.1
2023 Estimated Residential Population per Business	14.8	32.7	39.7

©2024, Sites USA, Chandler, Arizona, 480-491-1112 Demographic Source: Applied Geographic Solutions 11/2023, TIGER Geography - RS1